

KC Booth 3100 Series

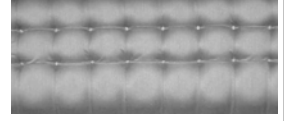


3100 Series

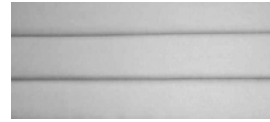
Available Back Treatments



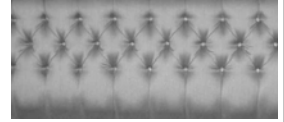
Plain



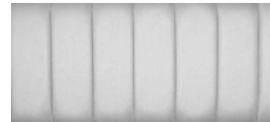
Square Tuft



6" Horizontal Channel



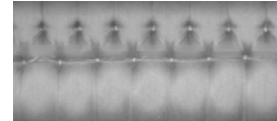
Diamond Tuft



6" Vertical Channel

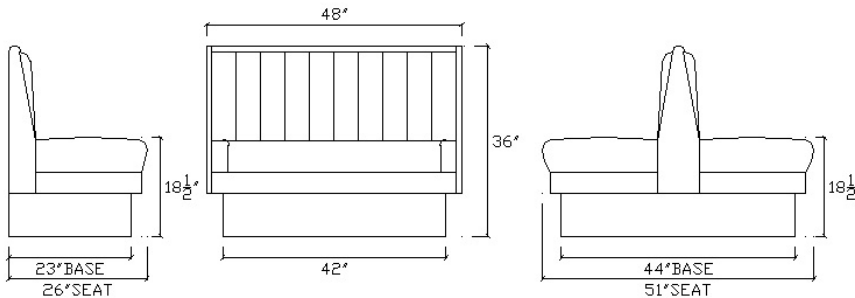


4" Vertical Channel



1/2 Diamond - 1/2 Channel

* Special note: Horizontal Channel & 1/2 Diamond - 1/2 Channel are all foam backs.



Model #	Description	Height	Width	Depth
3101-36X	Single Booth, finished 1 end	36"	47"	26"
3102-36X	Double Booth finish 1 end	36"	47"	51"
3101-36	Single Booth, finished 2 ends	36"	48"	26"
3102-36	Double Booth finish 2 ends	36"	48"	51"
3103H-36	Half Circle (No OSB)	36"	47"x90"x47"	26"
3103T-36	Three Quarter Circle (No OSB)	36"	47"x90"x90"x47"	26"
3105-36	Wall Seating (No OSB)	36"	Specify Length	26"

*No OSB means 'No Outside Back'-To be specified where required

***** SPECIFY BACK TREATMENT REQUIRED, AS SHOWN *****

Features:

- Genuine Hand Tuft Back
- Removable Spring & Foam Waterfall Seat w/ Stabilizer Bars
- Foam and Spring Back
- Heavy Wood Frame, Glued & Reinforced w/ Corner Blocks
- Closed 8" Round Corner Vinyl Base
- Custom Sizes Available Upon Request
- Seven Different Back Treatments Available, As Shown

