

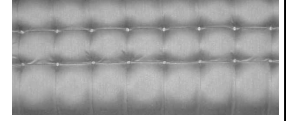
KC Booth 8400 Series



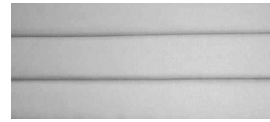
Available Back Treatments



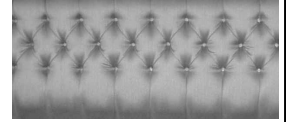
Plain



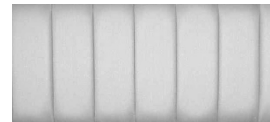
Square Tuft



6" Horizontal Channel



Diamond Tuft

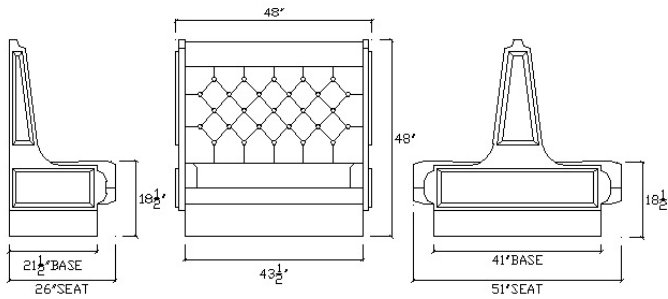


6" Vertical Channel



4" Vertical Channel

- 6" Horizontal Channel will be foam back



Model #	Description	Height	Width	Depth
8401-48X	Single Booth, finished 1 end	48"	48"	26"
8402-48X	Double Booth finish 1 end	48"	48"	51"
8401-48	Single Booth, finished 2 ends	48"	48"	26"
8402-48	Double Booth finish 2 ends	48"	48"	51"
8403H-48	Half Circle (No OSB)	48"	48"x90"x48"	26"
8403T-48	Three Quarter Circle (No OSB)	48"	48"x90"x90"x48"	26"
8405-48	Wall Seating (No OSB)	48"	Specify Length	26"

*No OSB means 'No Outside Back'-To be specified where required

***** SPECIFY BACK TREATMENT REQUIRED, AS SHOWN *****

Features:

- High Solid Wood Ends & Top Panel
- Removable Spring & Foam Waterfall Seat w/ Stabilizer Bars & Tailored Ends
- Foam Over Spring Back
- Heavy Wood Frame, Glued & Reinforced w/ Corner Blocks
- Closed 8" Round Corner Vinyl Base
- Custom Sizes Available Upon Request
- Six Different Back Treatments Available, As Shown

