

KC Booth 8900 Series

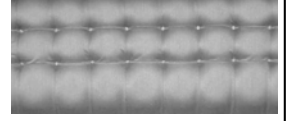


8900 Series

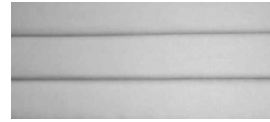
Available Back Treatments



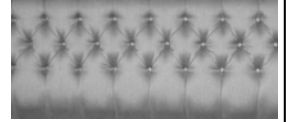
Plain



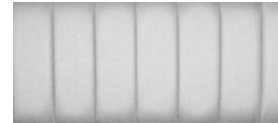
Square Tuft



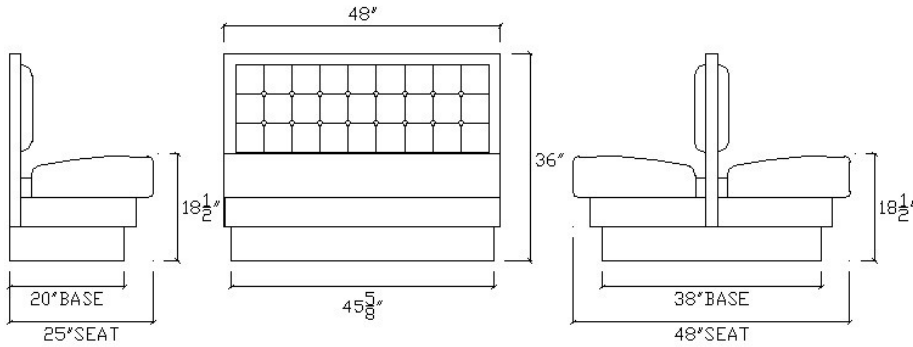
6" Horizontal Channel



Diamond Tuft



6" Vertical Channel



Model #	Description	Height	Width	Depth
8901-36X	Single Booth, finished 1 end	36"	48"	25"
8902-36X	Double Booth finish 1 end	36"	48"	48"
8901-36	Single Booth, finished 2 ends	36"	48"	25"
8902-36	Double Booth finish 2 ends	36"	48"	48"
8903H-36	Half Circle (No OSB)	36"	48"x90"x48"	25"
8903T-36	Three Quarter Circle (No OSB)	36"	48"x90"x90"x48"	25"
8905-36	Wall Seating (No OSB)	36"	Specify Length	25"

*No OSB means 'No Outside Back'-To be specified where required

***** SPECIFY BACK TREATMENT REQUIRED, AS SHOWN *****

Features:

- Laminated Trim to Include Outside Back & Complete Frame
- Removable Spring & Foam Roll Front Seat w/ Stabilizer Bars
- Removable Foam Back
- Heavy Wood Frame, Glued & Reinforced w/ Corner Blocks
- Laminated Crumb Rail
- Closed 8" Vinyl Base(std.) Optional Laminate base
- Custom Sizes Available Upon Request
- Five Different Back Treatments Available, As Shown

